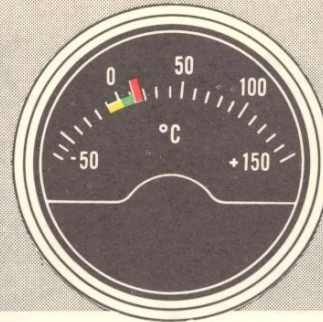


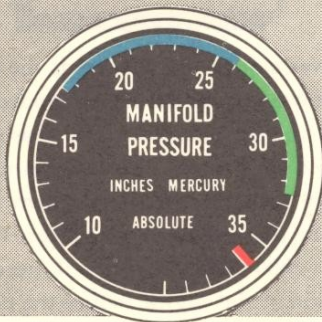
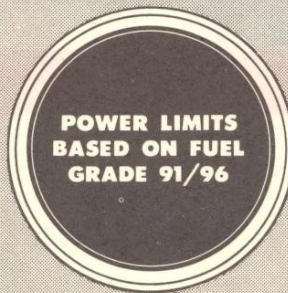
**CYLINDER HEAD TEMP**

- █ 150°- 232°C Manual Lean Permitted
- █ 232°- 260°C **RICH** Required
- █ 260°C Maximum



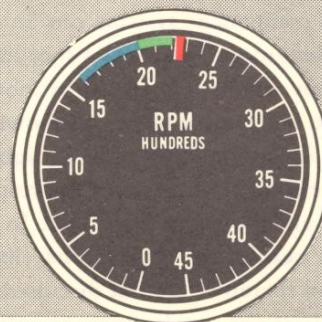
**CARBURETOR MIXT. TEMP**

- █ -10° to +3°C Danger of Icing
- █ 3° to 15°C Continuous Operation
- █ 15°C Maximum - Danger of Detonation



**MANIFOLD PRESSURE**

- █ 17.5 in. Hg Minimum Recommended in Flight
- █ 17.5 - 26 in. Hg Manual Lean Permitted
- █ 26 - 32.5 in. Hg **RICH** Required
- █ 32.5 in. Hg Maximum Continuous (Operation above this point limited to 5 min)
- █ 36 in. Hg Take-off (Military)



**TACHOMETER**

- █ 1600 rpm Minimum Recommended in Flight
- █ 1600 - 2000 rpm Manual Lean Permitted
- █ 2000 - 2200 rpm **RICH** Required
- █ 2200 rpm Maximum Continuous (Operation above this rpm limited to 5 min)
- █ 2250 rpm Take-off (Military)

Figure 5-1. Instrument Markings (Sheet 1 of 2)